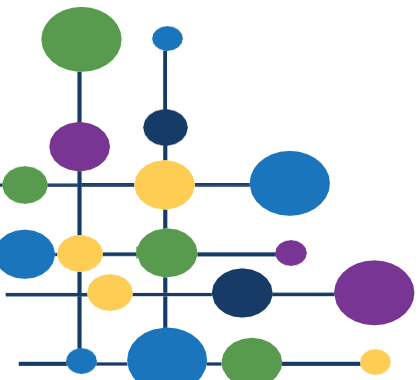


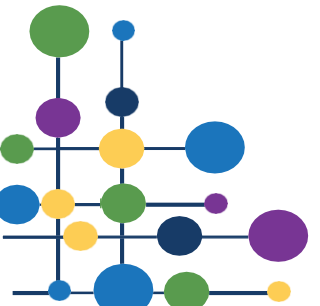
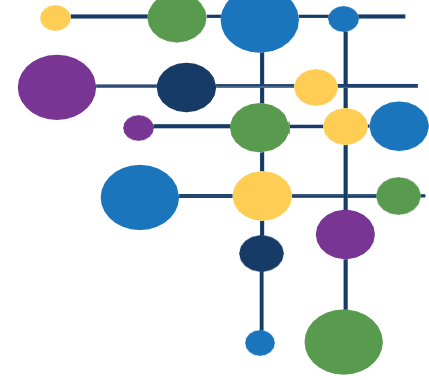
Admission information for joining Royds Hall in Year 7 on 1st September 2024

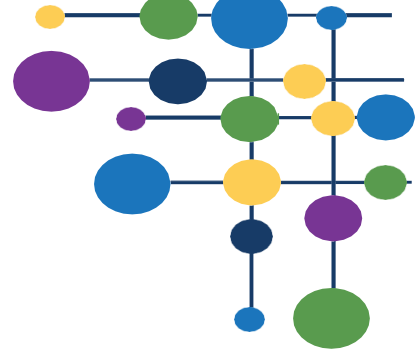


The Application Process

For September 2024

- Kirklees local authority manages admissions process and you can apply online. We have 172 places.
- Parents wishing to apply for a place at Royds Hall SHARE Academy for their child in Year 7 for 2024/25 must complete the SCAF supplied by their home local authority. Children with a statement of special educational needs will have a slightly different admissions process.
- If you live in Kirklees apply using: <https://www.kirklees.gov.uk/beta/admissions/apply-secondary-school-place.aspx> The completed SCAF should be returned by 31st October 2023 to Kirklees LA.
- Parents/carers must list Royds Hall a SHAREMAT Academy as one of their three preferences of secondary schools on the SCAF.
- Parents will be informed of the school allocation via email from the local authority on Wednesday 1st March 2024 at 8:30am via email.
- Children on roll at Luck Lane on 31st December 2023 in Year 6 will be offered a place at the secondary school phase but will need to apply via the Kirklees system.





Appeals Process

For September 2024

- The governors operate an independent appeals process
- Write to Miss V Sheath PA to the Head teacher, marking your letter as “Admission Appeal”
- You can discuss matters with our Assistant Headteacher (Mr D Hall) in charge of admissions.
- Once a written request has been received, we will endeavour to arrange the appeal panel within 10 working days.



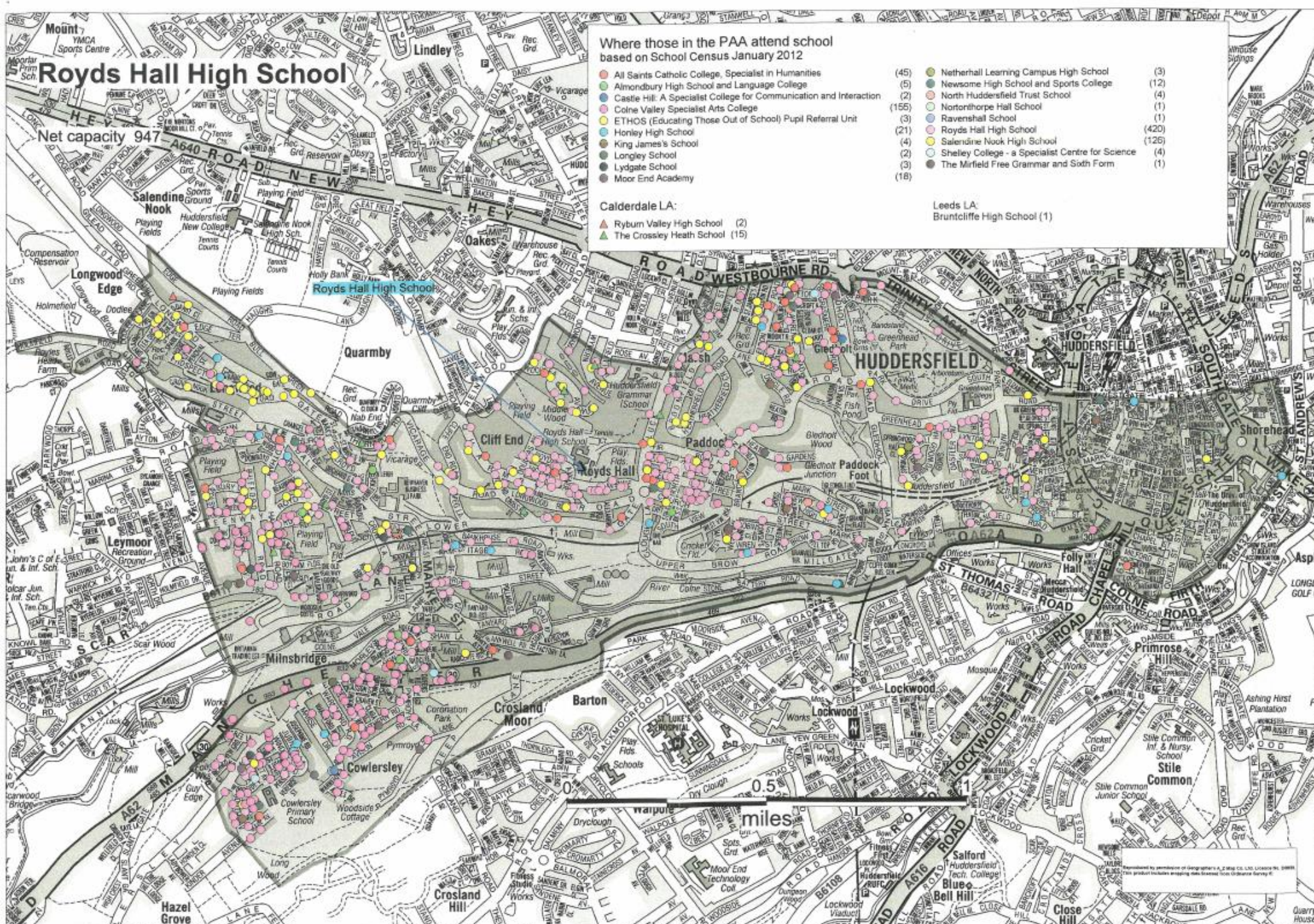


Oversubscription criteria

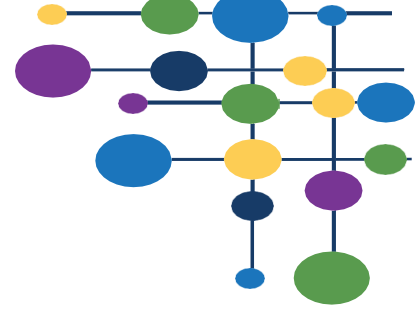
For September 2024

If there are fewer applicants than there are places available, everyone who applies will be offered a place. When there are more applicants than there are places available there has to be a way of deciding which children are offered places. This is done by having admission criteria which are considered in strict order of priority:

1. Children in public care (looked after children) and children who were previously looked after.
 2. Children who live in the school's Priority Admission Area (PAA) who have a brother or sister attending Royds Hall, a SHARE Academy or Luck Lane, a SHARE Primary Academy from the same address at the date of admission (the sibling rule).
 3. Children who live in the school's PAA (see appendix A).
 4. Children who live outside the school's PAA who have a brother or sister attending Luck Lane, a SHARE Primary Academy or Royds Hall, a SHARE Academy, from the same address at the date of admission (the sibling rule). Original documents may be requested by the Data Manager.
 5. Children who live outside the academy's PAA.
 6. In the event of a tie, children will be prioritised by the shortest straight-line distance from the academy (see notes below). If there still remains a tie random allocation by drawing lots will be used as a tie-break in categories 3, 4, 5, 6 or 7 to decide who has the highest priority if the distance between the two children's homes and the academy is the same. The process will be independently verified.
- Priority Admission Areas for all schools have been agreed and determined by Kirklees Local Authority



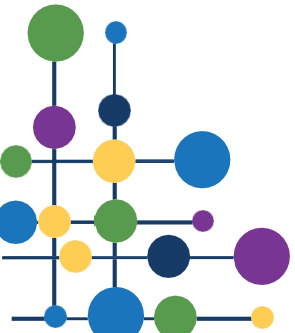
Priority Admission Area

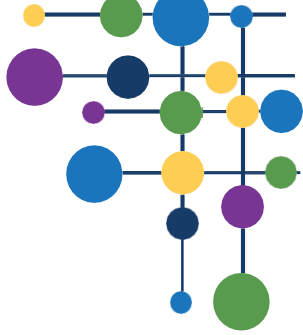


Priority Admission Area

To check, please use the following website:

<https://maps.kirklees.gov.uk/schooladmissionareas/default.aspx>





Next steps ...

- Throughout the year, Year 6 pupils from all our partner primary schools are invited for half-days visits, led by our Senior Students, so that they can get to know us.
- We make many visits to our partner primary schools so that pupils can get to know us and meet some of our excellent Student Ambassadors.
- All Year 6 students are invited to begin at Royds Hall for the last week of the summer term 2024. They will get to know their way around, meet their tutor group and their teachers – and settle in before the summer.

